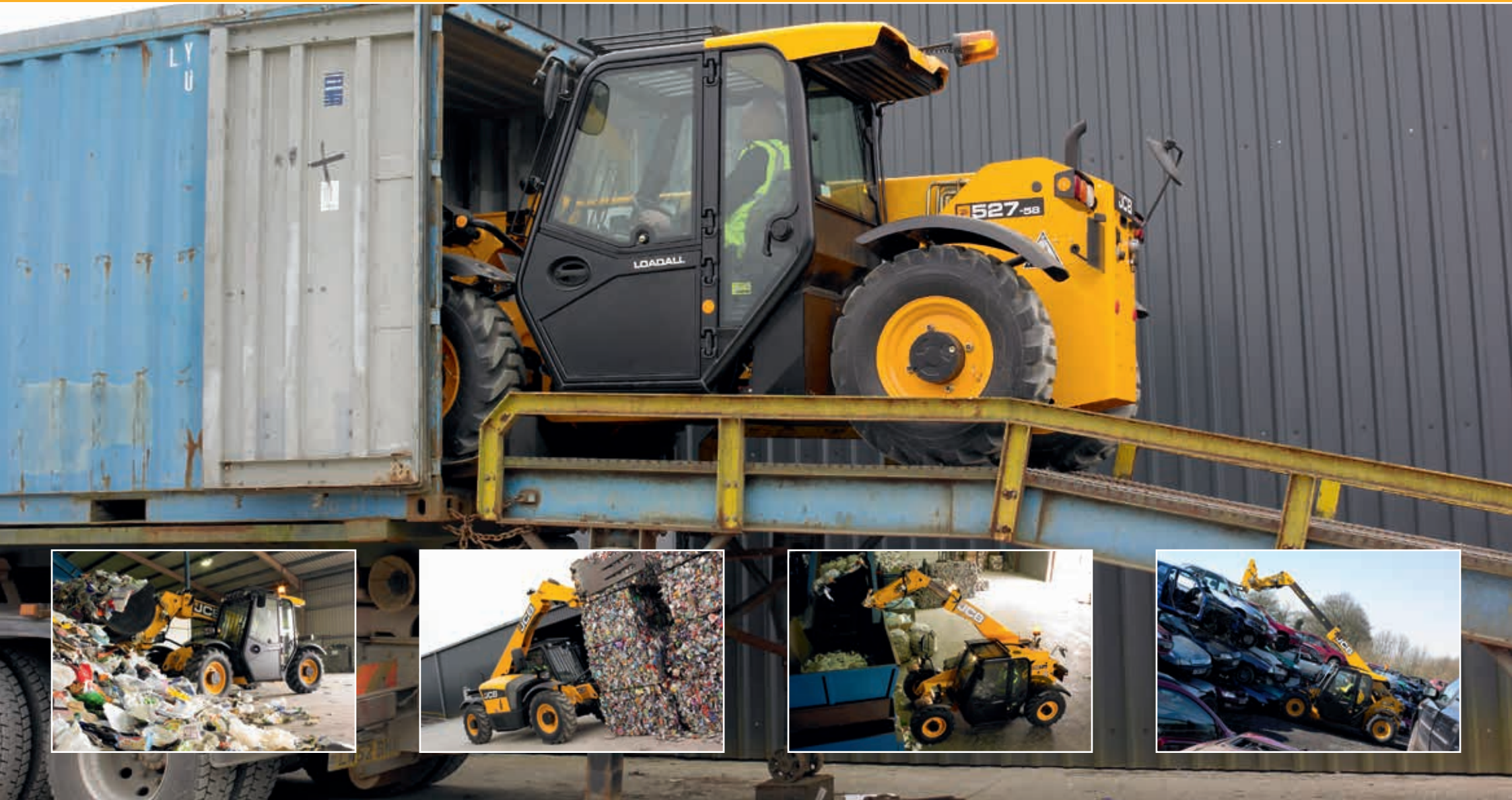


# Loadall 527-58 Wastemaster



Max. Payload: 2.7 tonnes (5952lb) Max. Lift Height: 5.8 metres (19ft)

A Product of Hard Work



**MAX. PAYLOAD: 2.7 tonnes (5952lb) MAX. LIFT HEIGHT: 5.8 metres (19ft)**

### STATIC DIMENSIONS

		mm (ft-in)
Overall height		2000 (6-7)
Overall width (over tyres)*		2040 (6-8)
Inside width of cab		880 (2-11)
Front track		1600 (5-3)
Wheelbase		2600 (8-6)
Ground clearance		300 (1-0)
Outside turn radius (over tyres)		3150 (10-4)
Weight	kg (lb)	5900 (13007)
Tyres		380/75 R20

*\*Dependant upon tyre specified.*

### ENGINE

Latest technology and advanced design provides low fuel consumption, reduced noise, high torque and power output, total reliability and minimal maintenance. Two-stage, dry type air filter with primary and safety elements. Territory dependent.

		Stage III
Model		Wastemaster
Manufacturer		JCB
Displacement	ltr (in <sup>3</sup> )	4.4 (269)
No. of cylinders		4
Bore size	mm (in)	103 (4.05)
Stroke	mm (in)	132 (5)
Aspiration		Turbocharged cooled
<b>Power rating</b>		
Power @ 2200rpm	kW (HP)	74.2 (100)
<b>Torque rating</b>		
Torque @ 1300rpm	Nm (lbf ft)	440 (324)

### HYDRAULICS

Two stage gear pump, fitted with suction strainer and filter. One boom end auxiliary hydraulic service fitted as standard.

Operating system pressure	bar (psi)	260 (3770)
Flow at system pressure @ 2200rpm	ltr/min (gal/min)	126 (27.7)
<b>Hydraulic Cycle Times</b>		<b>Seconds</b>
Boom raise		4.7
Boom lower		3.4
Extend		4.9
Retract		2.8
Bucket dump		2.2
Bucket crowd		2.8

### TRANSMISSION

Closed loop variable displacement pump with a continuously variable hydrostatic drive. Comprising of a mechanical gearbox, hydraulic motor and control unit. Permanent 4 wheel drive. Travel speed: 20kph (12mph).

### LIFT PERFORMANCE

Maximum lift capacity	kg (lb)	2700 (5952)
Lift capacity to full height	kg (lb)	2700 (5952)
Lift capacity at full reach	kg (lb)	1250 (2755)
Lift height	m (ft-in)	5.80 (19-0)
Reach at maximum lift height	m (ft-in)	0.33 (1-1)
Maximum forward reach	m (ft-in)	3.00 (9-11)
Reach with 1 tonne load	m (ft-in)	3.00 (9-11)
Placing height	m (ft-in)	5.07 (16-7)

Complies with stability test EN 1459 Annex B.

### ATTRIBUTES

- Compact dimensions (2.0m wide x 2.0m) and tight turning radius (3150mm) allow access in and around tight applications
- Powerful 100hp (74.2kW) turbocharged JCB Dieselmax engine gives high power-to-weight ratio for high productivity
- Servo joystick with intuitive, ergonomic controls – combined with a well-appointed, full-sized cab – provide low-effort, comfortable working conditions
- Hydrostatic transmission gives excellent control, ease of use, high tractive effort, fast acceleration and top speed up to 20kph
- A wide range of attachments, compatible with JCB Q-Fit, JCB Compact toolcarrier or Manitou quickhitches, help maximise versatility and productivity

